



Support of ACCESS TB Project on PMDT & BPAL OR

ACCESS TB Project 2021-2023

SYRUS S. SILVESTRE,
Strategy & Area Manager

May 21, 2021

AGENDA

- **ACCESS TB SUPPORT**
 - CASE DETECTION
 - TREATMENT
- **LCP-PMO STRUCTURE**

PMDT Activities & Support

Case Detection (Patients)

- **TB SCREENING**
 - CXR & GX testing
 - Transpo to STC/Dx Lab
 - Meals during screening & health education
- **CONTACT TRACING**
 - CXR
 - Transpo to STC/Dx Lab
 - Meals during screening & health education
- **COMMUNITY VOLUNTEERS**
 - Engagement, Contracts & Compensation
 - Provision of PPEs/Supplies

PMDT Activities & Support

Case Detection (Laboratory)

- **STRiders**
 - Engagement, Contracts & Compensation
 - Provision of PPEs/Supplies
- **LABORATORY
(TBCC/DST/LPA/MGIT)**
 - Office and Lab Supplies – Standard Supplies Request
 - Provision of PPEs
 - Facility maintenance
 - Communication Allowance
- **RTDL**
 - MOA, delivery of machines, and operationability
 - Provision of PPEs and cartridges
 - Office and Lab Supplies – Standard

PMDT Activities & Support

Treatment (Patients)

- **TREATMENT ENROLMENT**
 - Baseline diagnostic tests
 - Transpo to STC/Dx Lab
- **DURING TREATMENT & MONITORING**
 - Patient treatment & monitoring
 - SLDs & Ancillary Meds (through PRS)
 - Monitoring laboratory follow up tests
 - Transpo to STC/Dx Lab
 - Enablers
 - Treatment Allowance Package – Php100.00/day/pt
 - Food Packs/Allowance – Php30.00/day/pt
 - Special Assistance (for the whole duration of tx)
 - Hospitalization – Php30,000.00
 - Surgery – Php50,000.00
 - Special Diagnostics/Consultation – Php15,000.00 or as per request
 - Ancillary Drugs, Oxygen Support, Hearing Aids, etc. – as per request
 - Drinking Water
 - General Assembly/Group Discussion – Php100.00/pt/month
 - Half-way house
- **POST-TREATMENT**
 - Laboratory tests
 - Transpo to STC/Dx Lab

PMDT Activities & Support

Treatment (Facilities)

▪ TREATMENT CENTERS

- **Staff field activities - iDOTS visit, mentoring & monitoring (interrupter tracing, field contact tracing, home verification, decentralization, HDOT)**
- **Monthly staff meeting – TB Unit members involved in PMDT operations**
- **Office and Clinic Supplies – Standard Supplies Request**
- **Provision of PPEs**
- **Operational Expenses & Facility maintenance**
- **Communication Allowance**

PMDT General Support

Research

Capacity Building

Monitoring & Evaluation

▪ RESEARCH

- BPaL Operational Research Staff Salaries & Compensation
- Supervision, Monitoring & Evaluation activity of Research Unit
- Operational Expenses

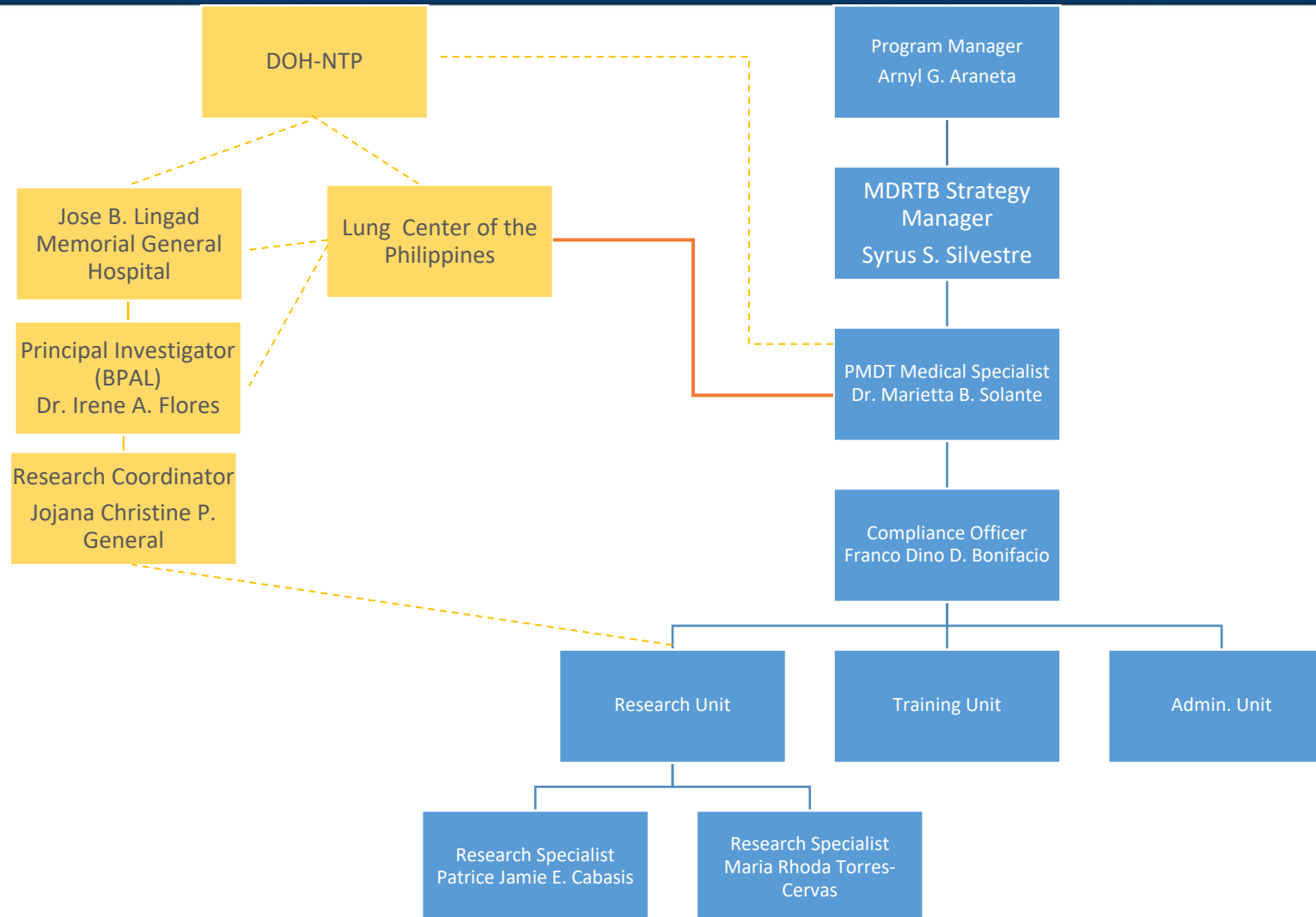
▪ TRAINING

- Training for Health Workers Providing TB Services (PMDT Training)
- Operational Expenses

▪ MONITORING & EVALUATION

- Data Quality Check (Q1 & Q3)
- Program Implementation Review & Consultative Meeting (Q2 & Q4)
- Supervision, Monitoring & Evaluation activity

LUNG CENTER OF THE PHILLIPINES - PROGRAM MANAGEMENT OFFICE / LCP-PMO STRUCTURE 2021-2023



THANK YOU

